



CROSS COUNTY CONNECTION



FY22



IMPACT REPORT

July 2021 — June 2022



CREATING EQUITABLE, SAFE, AND ENVIRONMENTALLY SUSTAINABLE TRANSPORTATION OPTIONS IN SOUTH JERSEY

www.driveless.com | ccctma@driveless.com



ABOUT CROSS COUNTY CONNECTION

PROVIDING TRANSPORTATION SOLUTIONS FOR SOUTHERN NEW JERSEY

Cross County Connection is the designated Transportation Management Association (TMA) for the seven-county southern New Jersey region: Atlantic, Burlington, Camden, Cape May, Cumberland, Gloucester and Salem. Cross County Connection assists local governments, schools, businesses, social service organizations, residents and employees with mobility needs by fostering the implementation and use of sustainable transportation modes.

Cross County Connection TMA was formally incorporated in 1989 through the efforts of a group of southern New Jersey business leaders, local government officials, and representatives from the New Jersey Department of Transportation (NJDOT) and New Jersey Transit Corporation (NJ TRANSIT) to address mobility issues in the region and reduce the number of vehicles on state and local roadways.

Commuting challenges are not just an inconvenience—they dramatically affect our quality of life, our independence and mobility, our ability to get to work, school, medical appointments, conduct business, and more. Today, Cross County Connection is a full-service transportation organization offering a wide variety of programs, services, and resources to southern New Jersey businesses, local governments, schools, residents, and employees.

MOBILITY DRIVES THE ECONOMY

Thanks to our partners' support, Cross County Connection can address many mobility needs. Long taken for granted, recent world events illustrate the importance of mobility—whether it means getting essential goods to distribution points, or workers and residents to essential services. Mobility is a driving force for the economy, and accessibility to transportation, and mobility options for ALL, must exist for the region to prosper.

Your TMA is a **MOVING FORCE**.
Let us help get you there, South Jersey.



One Greentree Centre, 10,000 Lincoln Drive East, Suite 102 Marlton, NJ 08053
856.596.8228 | www.driveless.com

TABLE OF CONTENTS

About Cross County Connection	ii
Message from the Executive Director	1
Cross County Connection TMA Members	2
Cross County Connection TMA Board of Trustees	3
Community Shuttles	4
Safe Routes to School.....	5-6
Commuter Services	7
Pedestrian + Bicyclist Safety / Street Smart NJ.....	8
Complete Streets Demonstration	9-10
Travel Training	11
CCCTMA in the News	12
Electric Vehicles.....	12
Communications + Outreach	13
GRANT + TDM Awards.....	14
FY22 Revenue	15
Cross County Connection Staff	16

MESSAGE FROM THE EXECUTIVE DIRECTOR

Dear Friends:

September 2022



The past year has seen a lot of growth and significant accomplishments at Cross County Connection TMA. I am pleased to present our Annual Impact Report for FY22 which highlights the achievements of your TMA.

We returned to the office in July 2021, and now work a hybrid schedule. Staff adapted quickly to this schedule and has proven that a telework program can be highly successful. With a seamless adaptation to new technology, our level of collaboration has remained high, and working remotely has proved to be beneficial to our workflow and output.

As a result of the pandemic, commuting trends and travel patterns have understandably changed significantly in the South Jersey region. We quickly realized that the TMA of yesterday may not be the TMA of tomorrow. To ensure we remain a current, relevant, and vibrant organization, we underwent a Strategic Planning process during the fall/spring of 2022. This process enabled us to take a hard look at what the region needs from our organization. After meetings with our stakeholders and staff, we have drafted a Strategic Plan that will enable us to grow and meet the changing demands of our constituents. This dynamic new Strategic Plan sets a bold and exciting Mission and Vision for the Organization, and identifies four primary areas of focus:

1. Assist local governments with bicycle and pedestrian safety plans; EV Infrastructure; shuttle services and grant opportunities
2. Teach K-12 students how to bike and walk safely through classroom education, and provide public transit travel training
3. Assist employers with commuter options to attract and retain employees
4. Provide general public with commuter resources to reduce single-occupancy vehicles and improve air quality

As of the writing of this Annual Report, we are finalizing our Strategic Plan and will be releasing it shortly. As you read this report, you will see quite a lot has been accomplished during the year. I hope you will agree that our extremely talented staff has truly accomplished much – despite the obstacles that the lingering pandemic presented.

I would like to thank our Board of Trustees, members and friends for your continued support of Cross County Connection. Your participation and guidance have greatly contributed to the impact our work has had on the region. I am especially grateful to my staff for their hard work and dedication to our mission. They are truly the heart and soul of the organization.

I look forward to collaborating with you all in the upcoming year as we strive to meet new challenges and demands that come our way.

A handwritten signature in blue ink that reads "Ronda R. Urkowitz".

Ronda R. Urkowitz, P.P., AICP
Executive Director

CROSS COUNTY CONNECTION MEMBERS

- Archer Attorneys at Law
- Burlington County
- Burlington County Chamber of Commerce
- Camden County
- Camden County Educational Services Commission
- Collingswood Borough
- Delaware River Port Authority (DRPA)
- Delaware Valley Regional Planning Commission (DVRPC)
- Evesham Township
- Environmental Resolutions, Inc.
- Haddonfield Borough
- Members at Large
- NJ Department of Transportation (NJDOT)
- NJ TRANSIT
- North Jersey Transportation Planning Authority (NJTPA)
- Pascale Sykes Foundation
- Pennsville Township
- Port Authority Transit Corporation (PATCO)
- Remington & Vernick Engineers
- Sierra Club West Group
- South Jersey Transportation Authority (SJTA)
- South Jersey Transportation Planning Organization (SJTPO)
- Southern New Jersey Development Council
- Taylor, Wiseman & Taylor
- USDOT, Federal Highway Administration (FHWA)
- Voorhees Township
- Winslow Township

CROSS COUNTY CONNECTION BOARD OF TRUSTEES

Mr. Andrew Levecchia, P.P., AICP*
PRESIDENT
Camden County

Mr. Bruce K. Easterly, P.E.*
VICE PRESIDENT
Taylor, Wiseman & Taylor

Ms. Carol Ann Thomas*
TREASURER
Burlington County

Mr. John D. Rink*
SECRETARY
Port Authority Transit Corporation (PATCO)

Mr. Michael F. Floyd, Esq.*
Archer Attorneys at Law

Mr. Barry Lem*
Member at Large

Mr. Joseph B. Hale*
Voorhees Township

***Executive Committee**

Mr. Kevin Rijs
Township of Evesham

Mr. William Riviere
NJ Department of Transportation (NJDOT)

Ms. Beth Waltrip
NJ TRANSIT

Mr. Kevin S. Murphy, AICP
Delaware Valley Regional Planning Commission (DVRPC)

Ms. Jennifer Marandino, P.E.
South Jersey Transportation Planning Organization (SJTPO)

Ms. Blythe Eaman
North Jersey Transportation Planning Authority (NJTPA)

Mr. Brian Goodson
Federal Highway Administration (FHWA) NJ Division

Mr. Timothy Staszewski
Remington & Vernick Engineers

COMMUNITY SHUTTLES

Cross County Connection provides planning and marketing support for three community shuttles in South Jersey that provide access to employment and educational opportunities, social services, medical, retail and other destinations. The shuttles provide regional accessibility to people who depend on public transportation in areas with limited public transit and connect with NJ TRANSIT bus and rail services.

- English Creek-Tilton Road Community Shuttle in Atlantic County
- Rt. 54/40 Community Shuttle in Atlantic County
- Pureland East-West Community Shuttle in Gloucester County

During the past year these shuttles provided over 45,000 rides. Most passengers are employed in essential-service businesses or could not work from home. Without these shuttles, many passengers would have lost their jobs.

CCCTMA Works to Ensure the Community Shuttle's Long-Term Sustainability

During FY22, Cross County Connection focused on finding long-term funding for the three community shuttles. This effort focused on raising awareness amongst potential funders, including: NJ Senate and Assembly representatives, state and federal agencies, economic development and social service agencies, employers, and community organizations. These community shuttles are funded through a NJ TRANSIT grant which requires 50% matching funds. The Pascale Sykes Foundation, a philanthropy focused on supporting working families, provides this match. However, the foundation sunsetted in June 2022, putting these services in jeopardy. However, thanks to Cross County Connection and its partners, funding has been secured for the continuation of the shuttles into FY23.

Actions Taken During FY22

- ✓ In September 2021, Cross County Connection's Executive Director, Ronda Urkowitz, participated in roundtable discussion with NJDOT Commissioner Diane Gutierrez-Scaccetti sponsored by Southern NJ Development Council (SNJDC). The Commissioner voiced her support for community shuttles. Following this, the NJDOT Commissioner's Office hosted three meetings to discuss shuttle funding needs.
- ✓ CCCTMA held meetings with state elected officials including Assemblyman Daniel Benson and Assemblyman William Moen, who respectively serve as Chair and Vice-Chair of the New Jersey General Assembly's Transportation and Independent Authorities Committee, and other members of the Assembly Committee to discuss ways to secure additional state funding to sustain the shuttles after the Pascale Sykes Foundation sunsets in 2022.
- ✓ At the request of Assemblyman Benson, Ronda testified before the New Jersey General Assembly's Transportation & Independent Authorities Committee in February 2022. The testimony emphasized transportation equity, a priority for the new legislative season.
- ✓ In June 2022, NJDOT Commissioner's Office recommended Atlantic and Gloucester Counties apply to the Local Transportation Planning Fund (LTPF) to obtain funding to replace the Pascale Sykes Foundation matching funds. This is a discretionary fund for local transportation projects. Approval of grants are at discretion of NJDOT Commissioner, an avowed supporter of the shuttles. Atlantic County will apply for funding in the summer of 2022. Assuming this funding is secured, the two Atlantic County shuttles will have matching funds for their NJ TRANSIT grants for FY23.
- ✓ Gloucester County was able to utilize a different funding source and received a grant from the American Rescue Plan Act to continue funding the Pureland East-West Community Shuttle.



SAFE ROUTES TO SCHOOL

Cross County Connection's SRTS activities promote walking and bicycling to school through student safety education programming. The implementation of this program improves children's safety, air quality, as well as reducing traffic congestion and fuel consumption.



School Travel Plans Lead to SRTS Infrastructure Grant Funding!

For its SRTS partners, Cross County Connection prepares School Travel Plans. These plans assess the biking and walking environment around schools. Infrastructure, policy, and program recommendations are provided to address identified issues. School Travel Plans are often used to successfully apply for grant funding through NJDOT's Safe Routes to School Infrastructure grant.

During FY22, CCCTMA prepared travel plans for Pemberton Township and Pennsville Township. Both municipalities used these plans to develop projects and support their application to NJDOT's Safe Routes to School infrastructure grant program. Both were awarded funding through the NJDOT's highly competitive 2022 SRTS grant program! In fact, seven of the eight 2022 SRTS grant recipients from South Jersey benefited from Cross County Connection preparing their school travel plans!



BY THE NUMBERS:

52 EVENTS CONDUCTED

300 BICYCLE HELMETS DISTRIBUTED

4,000 STUDENTS REACHED

5,500 PROMOTIONAL ITEMS DISTRIBUTED



SRTS RECOGNITION PROGRAM

The New Jersey Safe Routes Resource Center recognizes municipalities and schools for their commitment to the SRTS program. Nominees apply for recognition at one of four levels: First Step, Bronze, Silver, or Gold. Certification is valid for three years. The success of Cross County Connection's SRTS program is evident from the number of new schools/municipalities in the SRTS Recognition Program as well as in the number of schools/municipalities that have moved up a level.



CONGRATULATIONS TO SOUTH JERSEY'S SRTS RECOGNITION AWARDEES

FIRST STEP

- The Egg Harbor City Community School
- Estell Manor School
- Peter Muschal
- Florence Township Riverfront School
- J. Fithian Tatem School
- Dr. Albert M. Bean School
- John Glenn School
- Haddon Township Police Department
- Avon School
- Horace Mann
- Woodbine Elementary School
- Vineland Health Department
- Fairfield Township School
- Northfield Police Department
- Sustainable Voorhees
- Robins Nest School
- Charles L. Spragg School
- Egg Harbor City Community School
- New York Avenue Elementary School
- Seaview Elementary School
- Egg Harbor Township Police Department
- Folsom School
- Jordan Road School
- Municipal Recipient, Hammonton Bike and Pedestrian Advisory Committee
- Bordentown Regional Middle School
- Peter Muschal School
- Maude M. Wilkins Elementary School
- Howard R. Yocum Elementary School
- Samuel Smith Elementary School
- Charles Street School
- Moorestown Police Department
- Ethel M. Burke Elementary School
- Dr. Ulysses S. Wiggins College Preparatory Lab School
- Clara Barton Elementary School
- Gloucester Township
- Berlin Community School
- Bellmawr Police Department
- Cherry Hill Township
- Runnemede Police Department
- Thomas Paine Elementary School
- Municipal Recipient, Runnemede Cub Scout Pack 117
- Voorhees Township Police Department
- Leap Academy
- Ocean City Intermediate School
- Vineland City
- Wenonah Elementary School
- Clayton Borough
- Glassboro Borough
- National Park Elementary School
- Herma Simmons Elementary School
- Pennsville Township



GOLD

- Atlantic Avenue Elementary School
- Glenview Avenue Elementary School
- Seventh Avenue Elementary School

SILVER

- Margate City
- Florence Township
- Yorkship Family School
- Gibbsboro Elementary School
- Clementon Borough
- Clementon Elementary School
- Zane North Elementary School
- Charles Street School
- Evesham Township
- Margate City

BRONZE

- Dawes Elementary School
- Charles Street School
- Roebling Elementary School
- Mark Newbie
- Woodlynne School District
- Oldmans Township School
- Bordentown Police Department
- Palmyra Police Department
- Clementon Police Department
- Pennsville Township
- Chesterfield Elementary School
- J. Harold Van Zant Elem School
- Riverside Elementary School
- Palmyra Police Department
- Willingboro Police Department
- Katz Dalsey Academy Charter School
- Mark Newbie Elementary School
- Bingham Elementary School
- Grace Downing Elementary School
- Mary E. Volz School
- Bell Oaks Upper Elementary
- Collingswood Borough
- Laurel Springs School
- Fairfield Township School
- Vineland Police Department
- Oldmans Township School

BY THE NUMBERS:

90 SCHOOLS OR MUNICIPALITIES CERTIFIED

51 SCHOOLS OR MUNICIPALITIES ACHIEVED FIRST STEP RECOGNITION

3 SCHOOLS OR MUNICIPALITIES ACHIEVED GOLD RECOGNITION

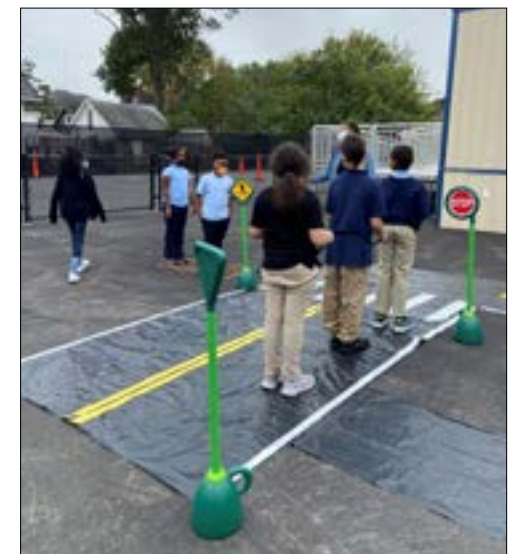
10 SCHOOLS OR MUNICIPALITIES ACHIEVED SILVER RECOGNITION

26 SCHOOLS OR MUNICIPALITIES ACHIEVED BRONZE RECOGNITION

32 SCHOOLS OR MUNICIPALITIES CERTIFIED RE-CERTIFIED IN 2022

60% CERTIFIED IN 2022 WERE NEW TO THE SRTS PROGRAM

60% RE-CERTIFIED IN 2022 MOVED UP A LEVEL FROM PREVIOUS YEAR

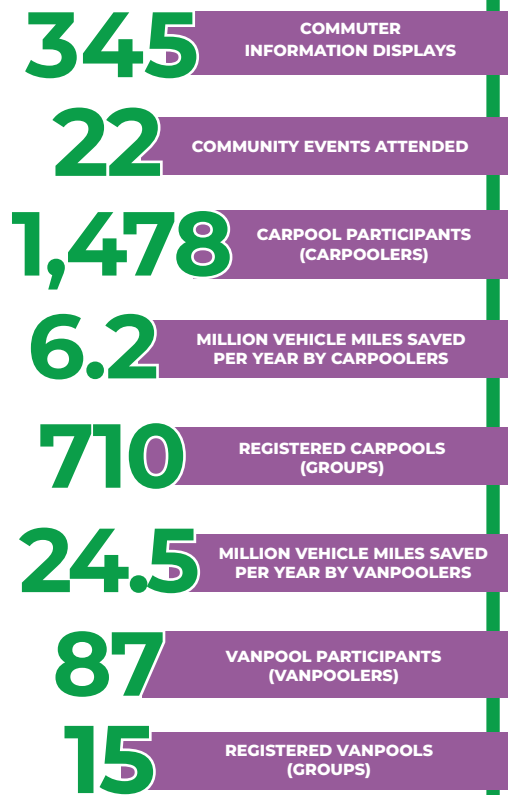


COMMUTER SERVICES

Cross County Connection assists South Jersey residents and employees with their commute to work by helping them form carpools and vanpools and utilize public transit. Cross County Connection also disseminates commuter information at job fairs and community events, as well as at information displays in public locations throughout South Jersey. Cross County Connection's carpool and vanpool groups have saved 30.7 million vehicle miles.



BY THE NUMBERS:



PEDESTRIAN + BICYCLIST SAFETY/STREET SMART NJ

The goal of the Street Smart NJ program is to educate pedestrians and motorists regarding traffic safety laws, and change their behaviors that lead to pedestrian crashes and fatalities. The campaign includes targeted public outreach and education in areas with a high rate of crashes involving pedestrians. With the assistance of the Cherry Hill Police Department, a month-long Street Smart NJ campaign kicked off on June 6, 2022. The campaign used banners, lawn signs, posters, postcards, and pamphlets, as well as social media to spread the Street Smart NJ safety messaging. Cross County Connection also hosted two other Street Smart NJ Campaigns this past year.



Posters and postcards were distributed to stores at the Cherry Hill Shopping Center and the Ellisburg Shopping Center, located in areas with a history of pedestrian crashes. Posters were hung in windows and cards placed at registers in stores that included: Wawa, Ross, Planet Fitness, Dollar Tree, ABO Plasma, Game Stop, Starbucks, Whole Foods, and Rita's Water Ice.



This provided a good opportunity to talk to employees at those businesses about pedestrian safety issues and the history of fatalities near their workplace, as these could be individuals who use the bus to get to work, or drive through the area. Similarly, visiting these stores provided an opportunity to interact with customers and distribute pamphlets while discussing these important topics. A total of 700 palm cards and 80 window posters were distributed to stores in these two shopping centers.

COLLINGSWOOD COMPLETE STREET DEMONSTRATION

The Collingswood Complete Streets Lab was an effort to encourage the use of walking and biking as a means of commuting and everyday travel. Cross County Connection's project partners included the Borough of Collingswood, Camden County, the Port Authority Transit Corporation (PATCO), and DVRPC. The project duration was Saturday, April 16, 2022, through Sunday, May 8, 2022.

At the center of the Collingswood Complete Streets Lab were demonstration projects on streets near the Collingswood PATCO station. A demonstration project uses low-cost materials to test out bicycle and pedestrian infrastructure in a real-world setting, before investing in a permanent project.

The Maple Avenue Bike Boulevard

To create a temporary bike boulevard, a space was created to slow motor vehicle speeds and increase the visibility of bicyclists and pedestrians. Curb extensions (aka bump-outs) were created using straw wattle, straw-bales, and traffic cones that could easily be adjusted. Bump-outs also prevented cars from parking too close to the crosswalks and corners at intersections, which is a frequent problem in Collingswood. Creating a setback at the corners and crosswalks increased the ability of bicyclists, pedestrians, and drivers to see one another as they navigated Maple Avenue and its cross streets. Some bump-outs were used to simulate a rain garden using flowers and plants. These act as a sponge for rainwater, relieving pressure on sewer systems, mitigating flooding, and soaking up pollutants. Signs and sharrow pavement markings were used to designate that Maple Avenue was a priority street for biking. These measures were also used on intersecting streets to create a bike loop connecting to the PATCO station.

Billson Avenue Protected Bike Lanes

A two-way protected bike lane was tested on Billson Avenue, connecting Haddon Avenue to the Collingswood PATCO station. An underutilized taxi waiting area was removed to provide space to construct a 12-foot-wide protected bike lane. Green paint was used at intersections where cars turn into the bike lane to access parking lots and the drop-off area in front of the PATCO station. Bollards were then glued down the middle of the buffer to create a defined physical barrier between automobile traffic and bike traffic.

The Delaware Valley Regional Planning Commission (DVRPC) provided Transportation Options Program (TOP) funding to support the promotional and educational campaign. The campaign issued a call to action to limit short SOV trips and embrace sustainable transportation modes as an effective way to improve air quality, combat climate change, and improve public health.



Overall, the project was a success. Notable outcomes included:

- A 10% increase in the number of people observed walking to and from the station during peak commute times
- A 27% increase in the number of people biking to and from the station during peak commute times
- 73% of survey respondents claiming they would walk and bike more if infrastructure tested became permanent
- Over 121,000 individual social media impressions targeting commuters traveling through the Collingswood PATCO station

The protected bike lane on Billson Avenue will remain in place and Collingswood Borough plans to seek grant funding to construct a larger and permanent Maple Avenue Bike Boulevard. Cross County Connection plans to partner with PATCO, Camden County, and Voorhees Township to do a similar project near Ashland Station in 2023.



FACT:
23% OF CARS IN THE COLLINGSWOOD PATCO LOT ARE FROM RESIDENCES WITHIN A 1/2 MILE THAT'S A 10-MINUTE WALK!
SOURCE: 2019 DELAWARE VALLEY REGIONAL PLANNING COMMISSION STUDY
#CARLESSCOMMUTE

TRAVEL TRAINING

Camden City High School Public Transit Travel Training Program

From February through April 2022, CCCTMA prepared and conducted a public transit travel educational program for students on the autism spectrum with Camden City's public high schools. CCCTMA coordinated the program in partnership with the Camden County Educational Services Commission (CCESC)

Combining three in-class lessons and two field trips, the curriculum provided instruction on how to use NJ TRANSIT and PATCO, the region's two major public transit services. The program reached 60 students in four classes—one class from Dr. Charles A. Brimm Medical Arts High School, one class from Creative Arts High School, and two classes at East Side High School (formerly Woodrow Wilson High School).



The in-class lessons, which incorporated PowerPoint presentations and hands-on activities, taught students how to use public transit safely, and how to use online navigation tools such as Google Maps to plan trips. During the field trips—one to the Cherry Hill Mall food court, and one to Downtown Collingswood—students became comfortable using NJ TRANSIT and PATCO and learned how to transfer between the two services at the Walter Rand Transportation Center. The program was so successful that CCCTMA will continue to work with CCESC on the same curriculum in the next fiscal year. CCCTMA looks to implement similar programs with other regional partners as well.

CCCTMA IN THE NEWS

NON-PROFIT OF THE YEAR

Cross County Connection TMA is extremely proud to announce having received the "Beyond the Glass Ceiling Award" as the 2022 Nonprofit of the Year, by the *South Jersey Chapter of the National Association of Women Business Owners (NAWBO NJ)* at their gala awards event this past March. Along with this prestigious honor, CCCTMA received formal recognition from the Senate and General Assembly of the State of New Jersey, and U.S. Congressional recognition from New Jersey Representative Andy Kim.

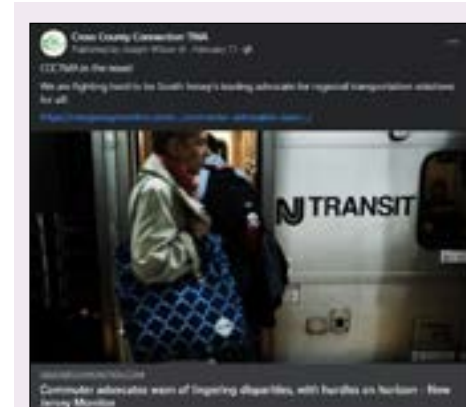


"Our organization is very grateful for this special recognition," said CCCTMA Executive Director Ronda R. Urkowitz, P.P., AICP. "Our job is to help empower South Jersey residents with more equitable, sustainable, and safe transportation solutions to access jobs, schools, and commuting alternatives. Such encouragement and support as this is a great feeling to know we're making a noticeable impact in our region."

Thank you from all of us at Cross County Connection!



From NJ BIZ: CCCTMA's Executive Director, Ronda R. Urkowitz, P.P., AICP, writes on the importance of community shuttles in South Jersey! <https://njbiz.com/opinion-getting-there/>

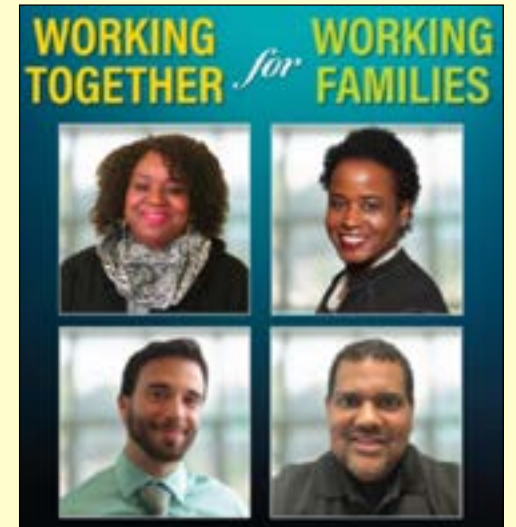


CCCTMA in the news! We are fighting hard to be South Jersey's leading advocate for regional transportation solutions for all!

Southern New Jersey Development Council article, "The Chronicle."



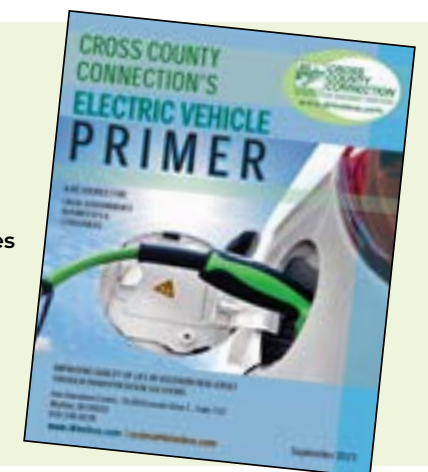
CCCTMA DOES A PODCAST!



Give a listen! CCCTMA's very own Nate Dorfman speaks on a very important topic: "Transportation Equity"

ELECTRIC VEHICLES

On April 30, CCCTMA tabled at the Camden County Sustainability Festival, distributing EV-related literature to over 200 attendees, including representatives of municipal Green Teams. CCCTMA staff answered attendees' question about EVs, their technology, and grant programs and incentives available to purchase EVs and charging stations. The EV Primer that debuted last year was a big hit with current and prospective EV owners alike. In the months ahead, CCCTMA looks forward to collaborating with state agencies, municipalities, local businesses and the public to expand the region's charging station network and promote the adoption of electric vehicles!



COMMUNICATIONS & OUTREACH

Digital Marketing Campaign, 2022

A dynamic and wide-reaching marketing campaign was launched to target both employers and employee commuters in the Greater Metropolitan Philadelphia/South Jersey area. Electronic "geo fences" were created to capture audiences in major public transit stations, large Camden and Center City Philadelphia office locations, and entertainment and sports venues along the Delaware River Waterfront.

- Commuter Benefits Programs
- On-Site Employee Commuter Fairs
- Sustainable/EV Strategies
- Carpool & Rideshare Matching

92.5 XTU - Philly's Country Station with Cross County Connection TMA

Sponsored

Let's GET to WORK, South Jersey! Today, commuting challenges aren't just an inconvenience, they affect quality of life, independence and mobility. Cross County Connection TMA is dedicated to improving the quality of life in South Jersey through transportation solutions.

Cross County Connection TMA

www.driveless.com

Cross County Connection TMA

Sponsored

Whether driving or walking - HEADS UP PHONES DOWN. Stay focused! No conversation or text is worth losing a life.

DRIVELESS.COM

Distraction isn't just dangerous, it can be deadly

- Driver inattention caused about 30 percent of all fatal crashes in New Jersey from 2014-2018, resulting in 915 fatalities.
- Reading a text for 5 seconds while traveling at 55 mph is like driving the length of a football field blindfolded.
- Using the use of cell phones while driving can result in fines in a range from \$200 to \$800 and up to a 30-day license suspension.
- According to the National Safety Council, distracted walking incidents are on the rise. People should stay alert and avoid distractions.



NJDHTS 2022 SUMMER SAFETY CAMPAIGN

NJ DRIVER ALERT: NEW SAFE PASSING LAW

Slow Down. Move Over. Pass with Care.

4 feet minimum. It's the law.

June to September, 2022 Covers all Atlantic and Cape May County Shore Town Zip Codes

47,000 AUDIO ADS PER MONTH 1,300 SOCIAL POSTS 125,000 DIGITAL ADS

BY THE NUMBERS:

1.8 MILLION AUDIENCE REACH ON WMMR & WMGK, WXTU

2.1 MILLION AD IMPRESSIONS SERVED

102 DIGITAL & BROADCAST RADIO COMMERCIALS ON TWO OF THE TOP STATIONS IN SOUTH JERSEY

600,000 SOCIAL MEDIA IMPRESSIONS

2,330 DRIVELESS.COM WEBSITE TRAFFIC VISITS

1,600 DRIVELESS.COM WEBSITE LINK CLICKS

200 SOCIAL MEDIA SHARES/LIKES

TDM AWARDS + GRANTS

Cross County Connection members are making a difference! The innovative TDM grant program rewards its members for implementing transportation-related projects by reimbursing a portion of their dues upon project completion. These projects may be small but their impact is mighty!



TDM AWARDS: IMPROVING SAFETY FOR ALL

- Protected Bike Lanes
- Striped Bike Lanes
- Striping of Crosswalks
- Construction of Missing Sidewalks
- LED Signage
- Circulation Plans



Congratulations to South Jersey Municipalities Receiving Federal and State Grants

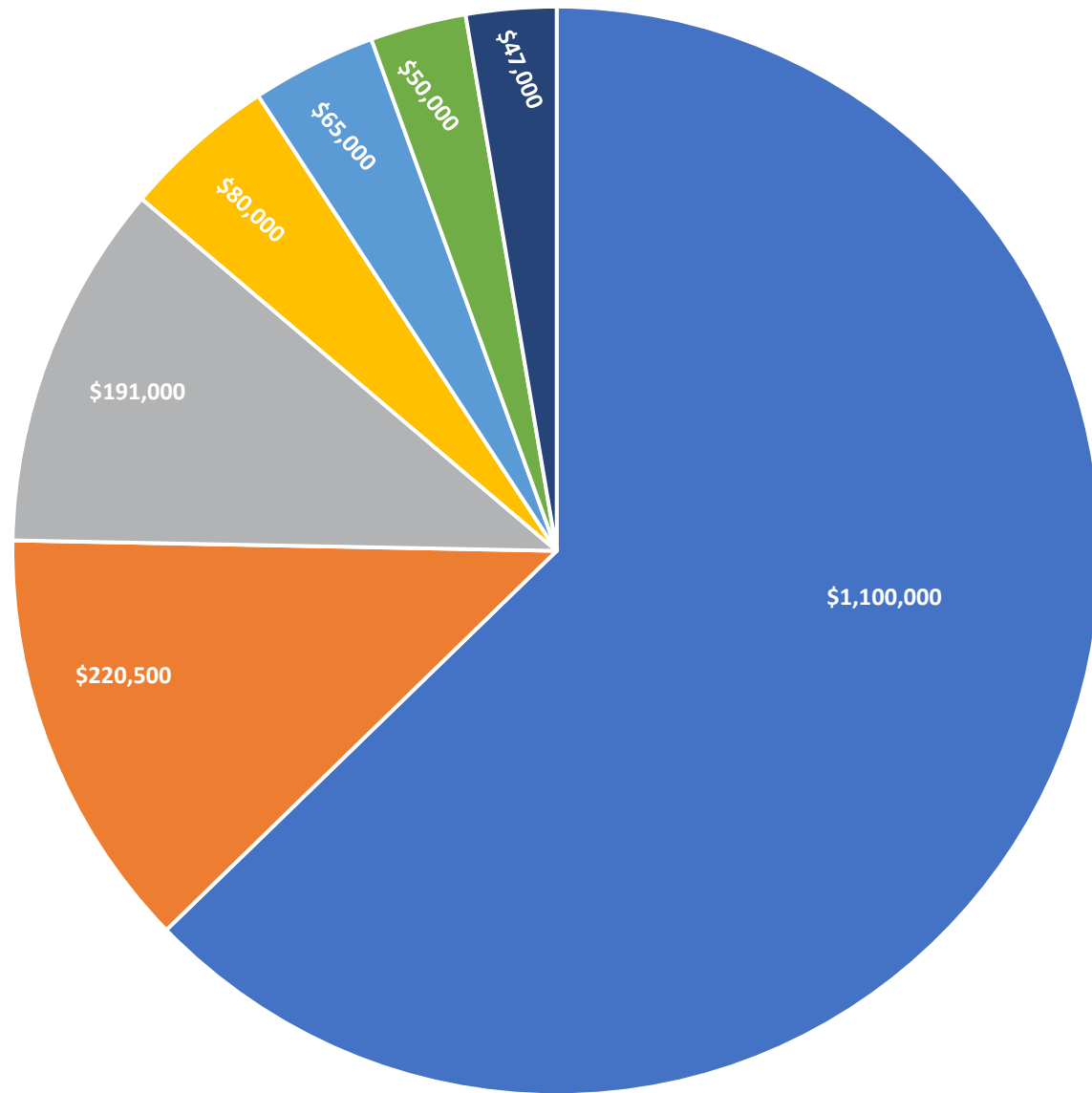
Over \$9.5 million was awarded to South Jersey towns during FY22 for infrastructure improvements to facilitate safe bicycling and walking to schools and transit stops. Over \$5 million was awarded under the Safe Routes to School Program and over \$4 million under the Safe Streets to Transit Program through NJDOT's Division of Local Aid and Economic Development. Congratulations to the following awardees on their success with these highly competitive grants!



FY22 SAFE ROUTES TO SCHOOL GRANT RECIPIENTS			
County	Municipality	Project Name	Grant Amount
Atlantic	Pleasantville City	School Transportation Safety	\$1,299,000.00
Burlington	Pemberton	SRTS-Multimodal Improvements	\$256,000.00
Camden	Bellmawr Borough	Intersection Improvements	\$422,000.00
Camden	Clementon	Intersection Improvements	\$470,000.00
Camden	Haddon Heights	Installation of Missing Sidewalks	\$1,200,000.00
Camden	Voorhees	Pedestrian Improvements	\$675,000.00
Gloucester	Clayton Borough	School Transportation Safety	\$632,000.00
Salem	Pennsville	Pedestrian Safety & Traffic Calming	\$425,000.00
TOTAL SAFE ROUTES TO SCHOOL GRANTS			\$5,379,000.00

FY22 SAFE STREETS TO TRANSIT GRANT RECIPIENTS			
County	Municipality	Project Name	Grant Amount
Atlantic	Absecon City	Streetscape Improvements	\$525,000.00
Atlantic	Egg Harbor City	Transit Path Extension	\$600,000.00
Atlantic	Hammonton Town	Sidewalk Improvements	\$265,000.00
Burlington	Delran Township	Pedestrian Safety Improvements	\$575,000.00
Burlington	Edgewater Park	Pedestrian Improvements	\$295,000.00
Burlington	Evesham Township	Roadway Improvements	\$1,000,000.00
Burlington	Fieldsboro	Pedestrian Safety Improvements	\$225,000.00
Camden	Collingswood	ADA Ramps	\$370,000.00
Camden	Voorhees	Sidewalk Improvements	\$200,000.00
Cape May	Middle Township	Sidewalk Extension	\$150,000.00
TOTAL SAFE STREETS TO TRANSIT GRANTS			\$4,205,000.00

FY 22 REVENUE



TOTAL REVENUE:
\$1,753,500

- NORTH JERSEY TRANSPORTATION PLANNING AUTHORITY
- PASCALE SYKES FOUNDATION
- NJ DEPARTMENT OF TRANSPORTATION
- NJ TRANSIT
- MEMBERSHIP/IN-KIND
- DELAWARE VALLEY REGIONAL PLANNING COMMISSION
- NJ DIVISION HIGHWAY TRAFFIC SAFETY



CROSS COUNTY CONNECTION STAFF

Ronda R. Urkowitz, P.P, AICP
Executive Director

Patrick C. Farley, P.P, AICP
Program Director

Joseph M. Wilson, M.Sci
Marketing and Communications Director

Marianne E. Sperry
Office Manager

Nathan Dorfman
Senior Transportation Planner

Hanna Jacobs
Transportation Planner

Pedro Rodriguez
GIS Specialist

Latifah Sunkett
SRTS Coordinator

Michele Geiger
Public Outreach Coordinator

Nashay Craig
Communications Assistant

Jill N. Van den Burg
Executive Assistant

Brianna Casal
Administrative Assistant

